

## *Common symptoms and investigations of heart disease*

*Andrew Ying-Siu Lee, MD, PhD.*

### common symptoms

### probable heart diseases



chest tightness, chest pain,  
chest discomfort

ischemic heart disease,  
arrhythmias, cardiomyopathy etc.



palpitation

cardiac arrhythmias etc.



dizziness, conscious disturbance

arrhythmias, heart failure, etc.



dyspnea, shortness of breath

heart failure, ischemic heart disease,  
cardiac arrhythmias etc.

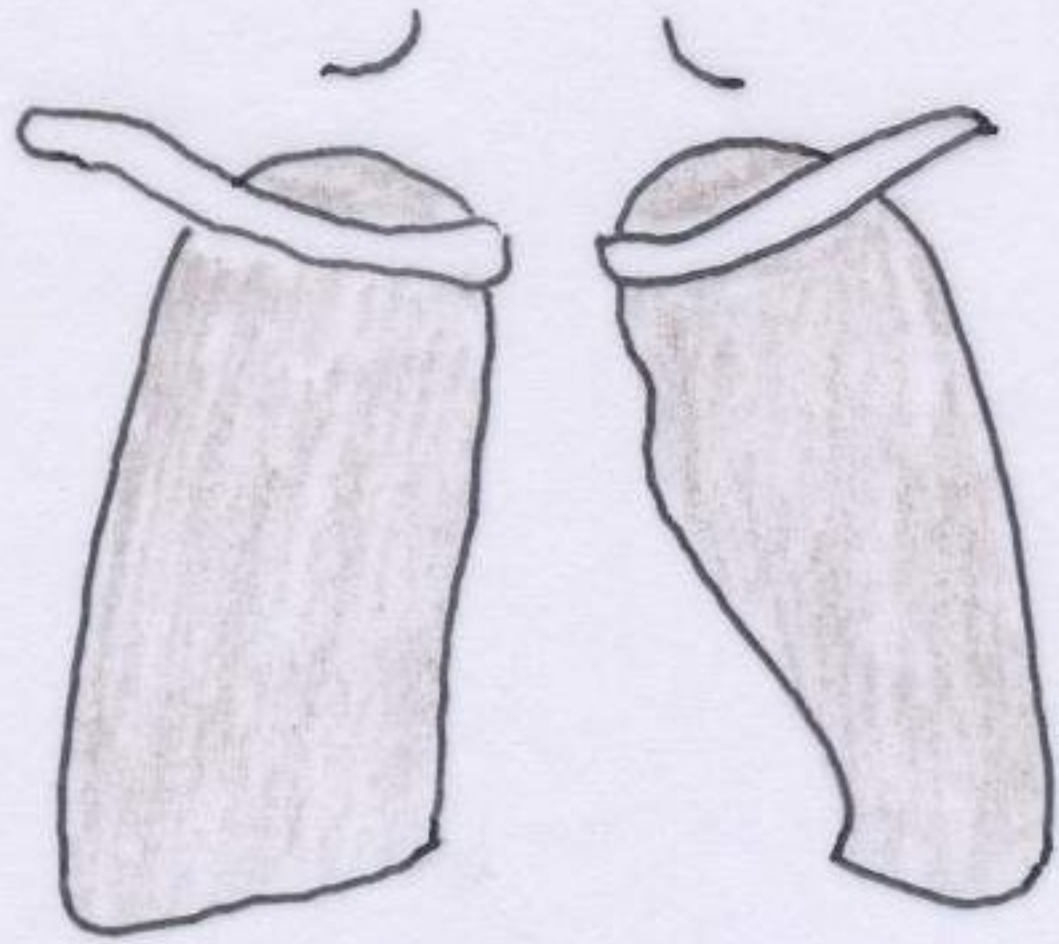


edema, poor appetite, fatigue

heart failure etc.

Common investigations of heart disease

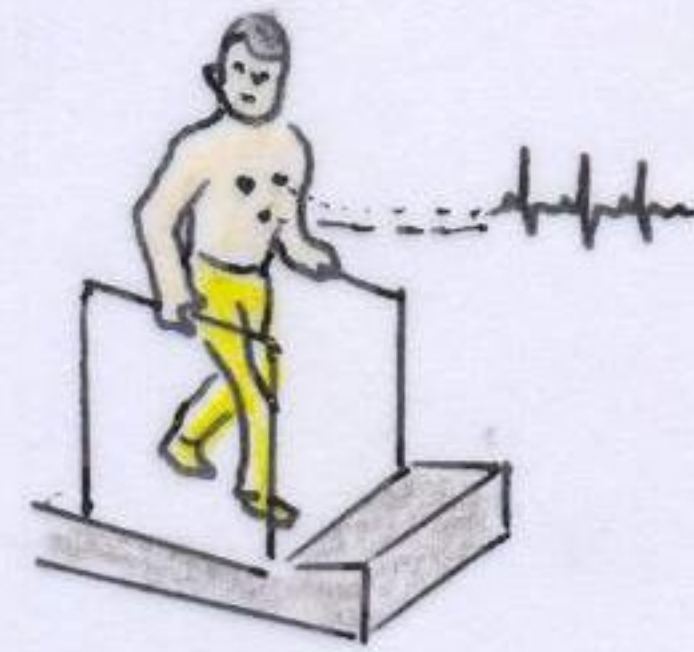
(please refer to video presentation)



chest X ray



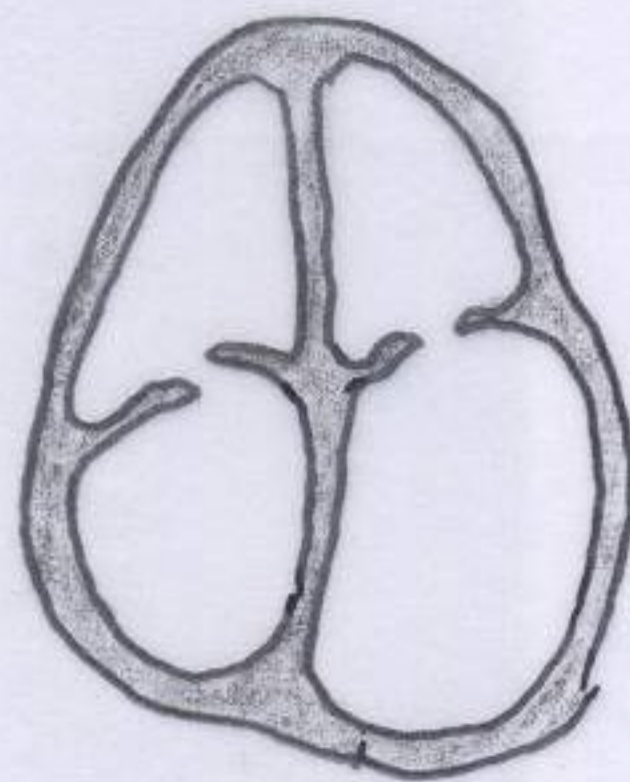
electrocardiogram



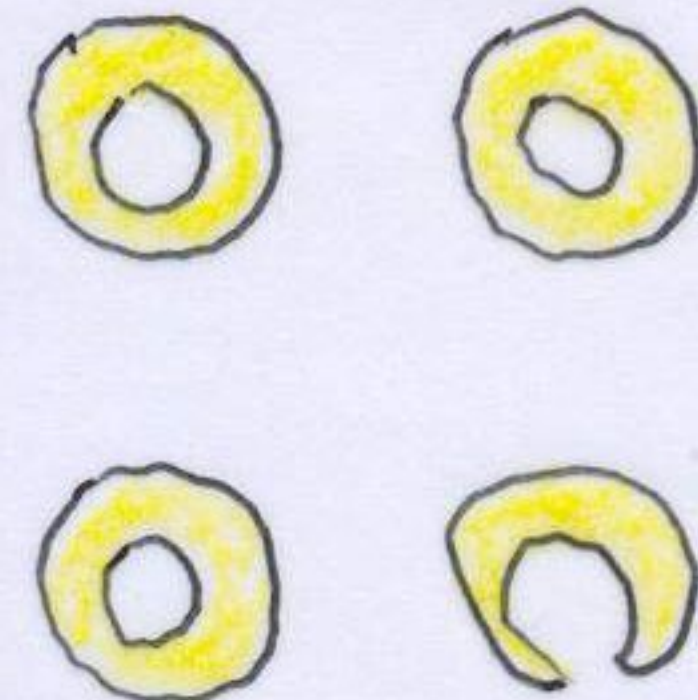
exercise electrocardiogram



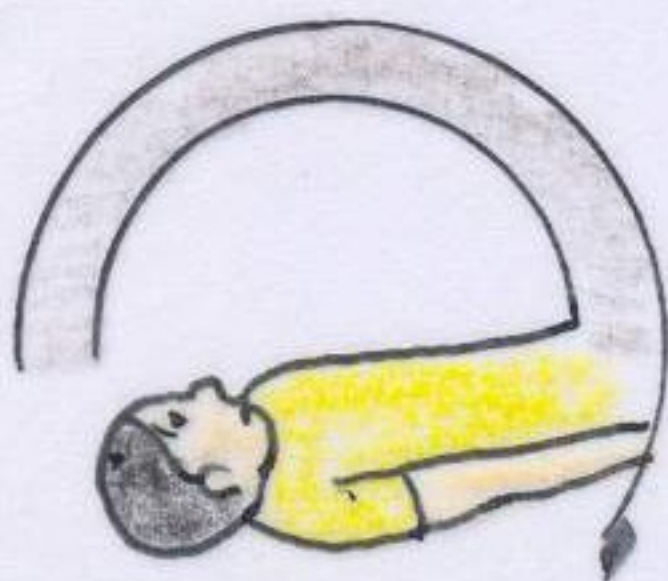
24 hr electrocardiogram



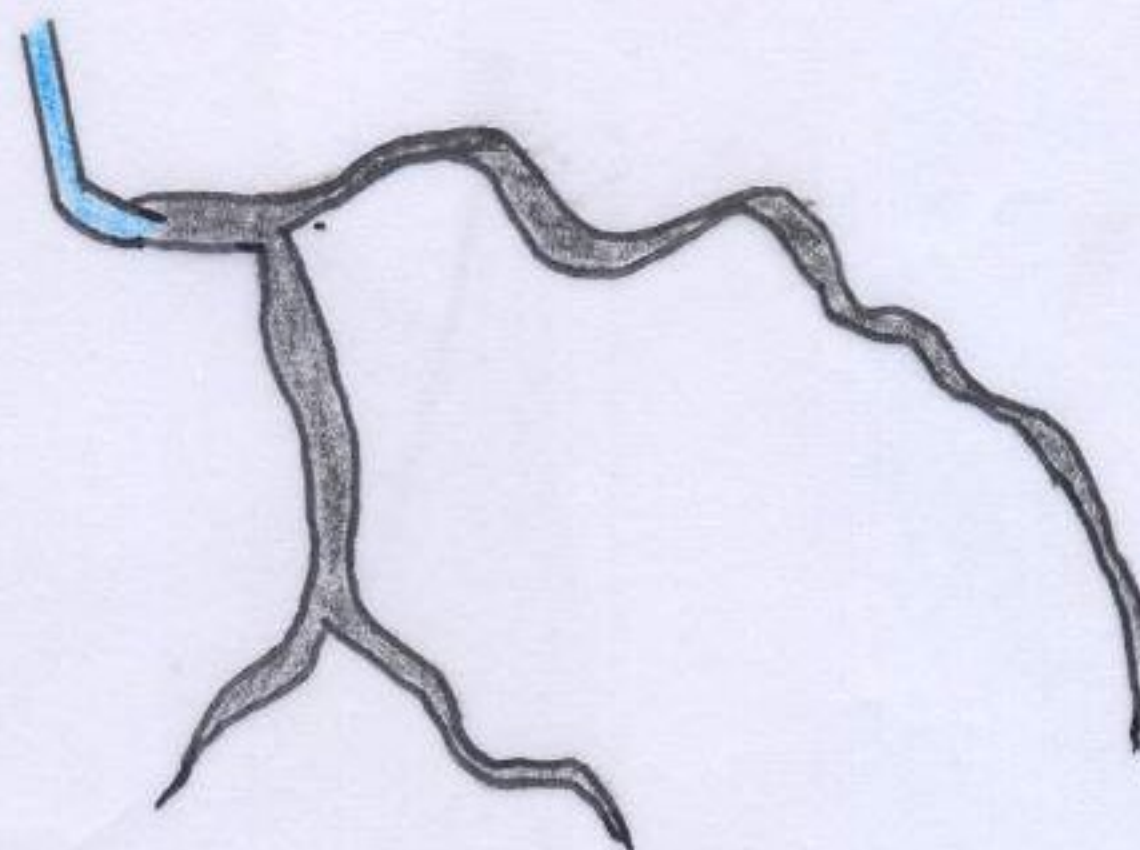
echocardiography



myocardial scintigram



heart 64MS computerized tomography



cardia catheterization